



Pet Health Management



The Pain-Free Blood Glucose Monitoring System User Instructions for the Genteel® Lancing Device

STOP! If you need troubleshooting assistance or more help with your Genteel blood draw experience, **PLEASE DO NOT WAIT TO CONTACT US. WE ARE HERE TO HELP!**

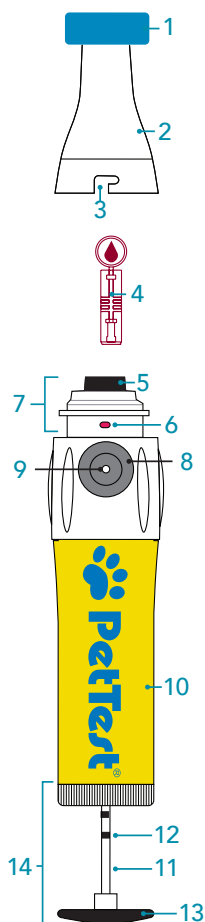
For more information visit www.ShopPetTest.com/Genteel
Email us at sales@ShopPetTest.com
Call our 24/7 support line at +1 (866) 373-2824

Distributed By: Diabetic Supply of Suncoast, Inc.
PO Box 2102, Vega Alta, PR 00692
1-866-373-2824 / www.ShopPetTest.com
(24 hours a day / 7 days a week)

Follow us on:
 [Facebook.com/PetTest](https://www.facebook.com/PetTest)

1.0 PETTEST / GENTEEL PARTS

- (1) Contact Tip
- (2) Nozzle
- (3) Nozzle Slots
- (4) Lancet
- (5) Shuttle
- (6) Front End Tabs
- (7) Front End
- (8) Activation Button
- (9) Hole In Activation Button
- (10) Vacuum Tube
- (11) Push Shaft
- (12) Vacuum Indicator
- (13) Push Cap
- (14) Piston Assembly



4.0 PREPARE GENTEEL FOR LANCING

PREPARATION: Clean the surface of Genteel and other testing supplies. Verify Contact Tip is securely affixed to Nozzle.

4.1 Prime Genteel: Press the **Push Cap** to prime the PetTest/Genteel, device clicks if done correctly.

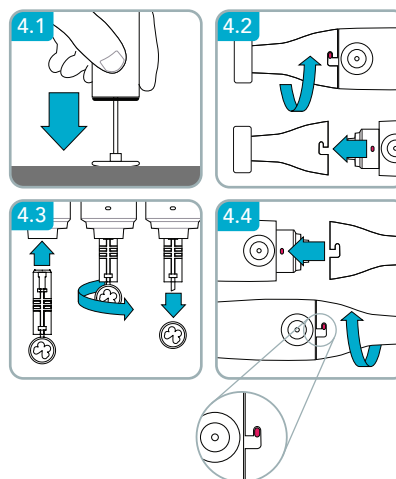
4.2 Remove Nozzle: Twist counterclockwise and pull gently to remove.

4.3 Insert a Lancet: While the PetTest/Genteel is primed, insert either a **Blue Butterfly** or **PetTest Maroon** lancet into **Shuttle** and the #1 **Blue** Contact Tip to start the test. Carefully twist off the protective cover from lancet and put aside. (The **PetTest Maroon Twist Top** lancets are 6 steps more aggressive than the **Blue Butterfly Touch** lancets.)

Note: You want to use the thickest Contact Tip that gets the right amount of blood with little to no discomfort. Contact Tips going from thickest to thinnest: #1 **Blue** #2 **Yellow**, #3 **Green**, #4 **Clear**, #5 **Orange**, #6 **Violet**.

NOTE: Different test sites may require a different Contact Tip.

4.4 Replace Nozzle: Line up the Nozzle Slots with the Front End Tabs. Gently push together and rotate clockwise into place.



5.0 PERFORM BLOOD DRAW

Wash hands with soap and water. Clean test site. Have your meter and test strip ready to wick up your blood sample.

5.1 Place Genteel on skin: Pick your test site from the diagram in 3.0 at the top right. Make sure you have a seal between Contact Tip and skin by gently and flatly holding the device perpendicular to the skin. Do not press Genteel forcibly into the skin, as this can cause pain during testing.

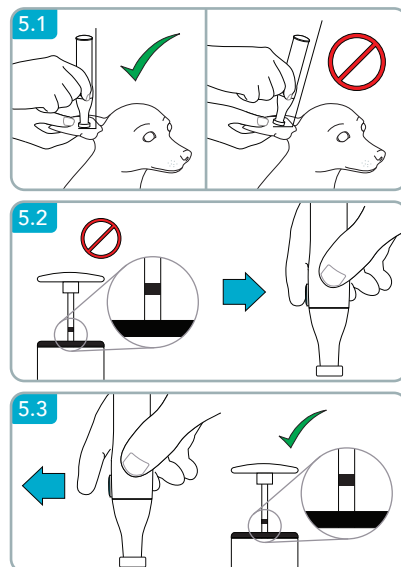
NOTE: Hold Genteel like a pen, with index finger on the Activation Button.

5.2 Press Activation Button: Using gentle pressure, hold down the Activation Button for at least 4 seconds, or until you see a blood drop form.

NOTE: With your finger over the Activation Button, the plunger will rise slowly to the halfway point, but not fully extend (you should not see the red Vacuum Indicator).

5.3 Release Activation Button: BEFORE pulling Genteel away from your skin, lift your finger off the Activation Button. Pull Genteel away from the skin. If done out of order, blood drop may smear.

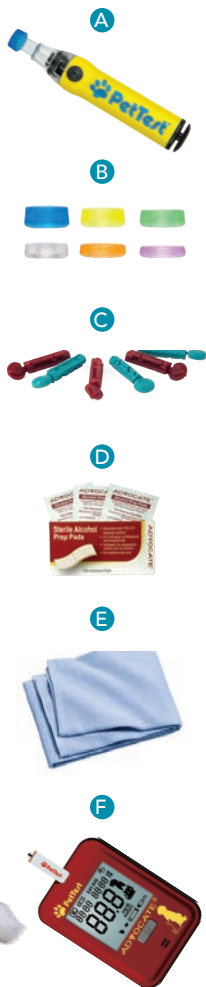
NOTE: Hold Activation Button longer to get a larger blood drop. If no blood is produced, choose the next thinnest Contact Tip in order depending on the lancet and body site chosen.



2.0 GATHER SUPPLIES NEEDED

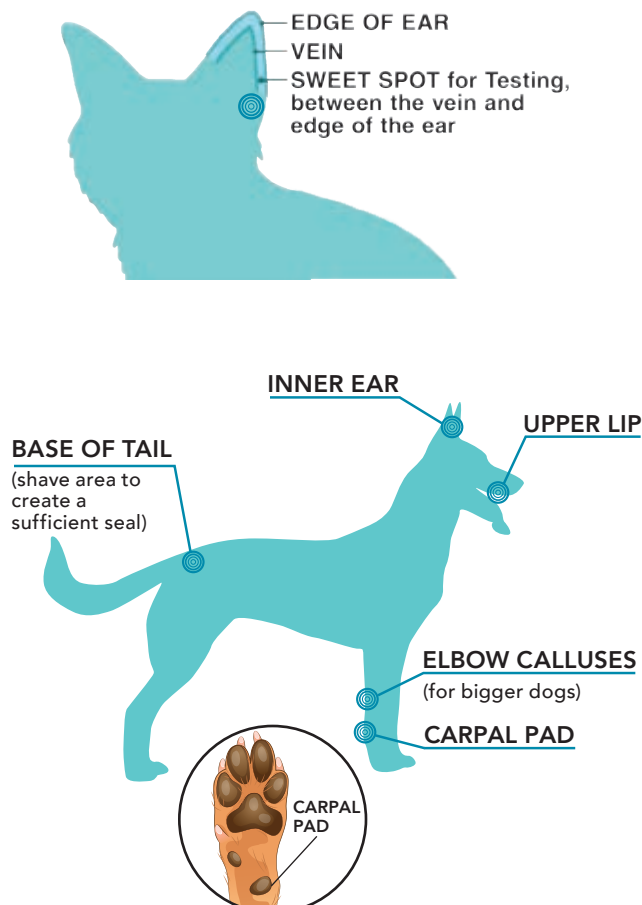
With clean hands, gather supplies needed for testing:

- (A) PetTest/Genteel Lancing Device
- (B) Contact Tip Card (contains 6 Contact Tips)
- (C) Advocate Twist Top or Butterfly Touch Lancets
- (D) Alcohol (not included) to clean Contact Tip
- (E) Clean, damp cloth (not included) for cleaning Genteel's surface
- (F) Meter and test strips



3.0 TESTING SITES FOR DRAWING BLOOD

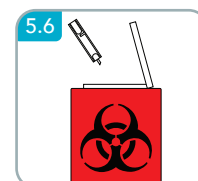
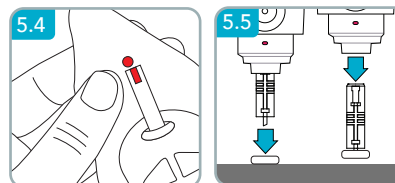
Cats have one testing site while dogs have up to six to choose from.



5.4 Test Blood Sugar: Apply the meter's test strip to the blood drop and follow the instructions for the test strips and meter.

5.5 Remove Lancet: Prime Genteel again (see 4.1) and remove Nozzle (see 4.2). Carefully insert lancet needle into its protective cap. Once needle is safely in its protective cap, remove the lancet.

5.6 Lancet Disposal: Safely dispose of the used lancet according to local laws for Sharps disposal.



6.0 CLEANING GENTEEL

6.1 Surface cleaning: Before every use, wipe the outside of the device with a clean damp cloth.

IMPORTANT: If the Push Shaft rises past its halfway point—while holding the Activation Button, this may be a vacuum leak caused by dirt or other contaminants inside Genteel. If you experience this vacuum loss symptom—perform (6.2). If symptom persists—perform (6.3). If cleaning doesn't resolve vacuum leak, call customer support +1 (866) 373-2824.

6.2 Quick Clean (inside):

6.2.1 Remove Piston Assembly: De-prime Genteel by pressing Activation Button. Twist Piston Assembly base counter-clockwise until you can pull it out of the Vacuum Tube.

6.2.2 O-ring Wipe: Wipe the O-ring on the Piston Assembly with your clean finger to remove surface dirt or other contaminants.

6.3 Deep Clean (inside):

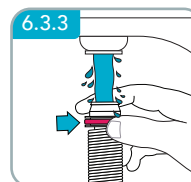
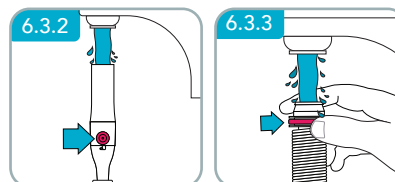
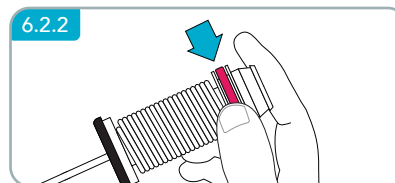
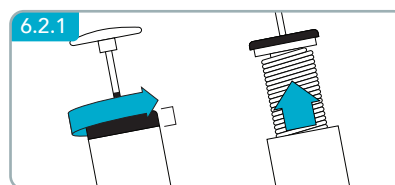
6.3.1. Remove Piston Assembly: Repeat step 6.2.1

6.3.2. Flush Vacuum Tube: Run fast moving, warm water through the Vacuum Tube and out the Nozzle while repeatedly pressing the Activation Button.

6.3.3. Flush Piston Assembly: While running the Piston Assembly under fast-moving, warm water repeat 6.2.2.

6.3.4. Dry: Let Genteel air dry thoroughly. Do not reassemble Genteel with moisture in the Vacuum Tube.

6.3.5. Reassemble: Put Piston Assembly back inside the Vacuum Tube and twist base clockwise until it locks into place securely. Verify device functions as intended.





Quick Use Instruction Guide

5 IDEAL TEST LOCATIONS

BASE OF TAIL
 (shave area to create a sufficient seal)

INNER EAR

UPPER LIP

ELBOW CALLUSES
 (for bigger dogs)

CARPAL PAD

CARPAL PAD

IDEAL TEST LOCATION

EDGE OF EAR

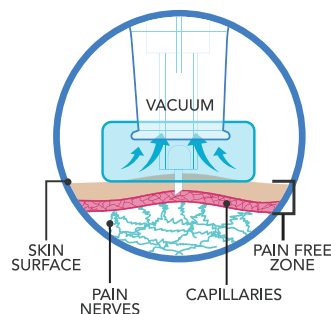
VEIN

SWEET SPOT for Testing,
 between the vein and
 edge of the ear

Check with your vet to see if they have
 a preferred location for testing.

Watch how it works at

www.ShopPetTest.com/genteel



How to check your pet's blood sugar:

1. Place the PetTest Genteel lancing device on your chosen test location (you may need to shave the testing area).
2. Press and hold the Activation Button until a blood drop is formed.
3. Lift finger off the Activation Button, then remove the lancing device from the pet's skin.
4. Apply the blood drop to the PetTest test strip.

